

Ember Reds and Evergreens



makower uk

11/22/10

1384 Broadway
New York, NY 10018
(800) 223-5678
www.andoverfabrics.com

FABRICS BY Jo Morton

Quilt designed and made by Candy Hargrove
Machine quilted by Maggi Honeyman • Finished size: 54" x 64"

Ember Reds and Evergreens



Fabrics shown are 20% of actual size. All fabrics used in quilt.

Fabrics by Jo Morton

makower uk®



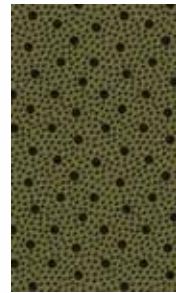
5178-G



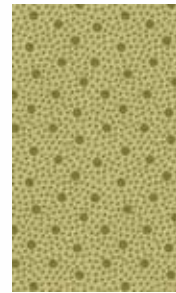
5178-R



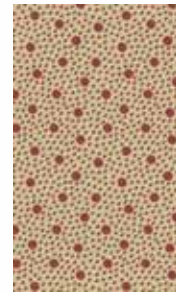
5178-Y



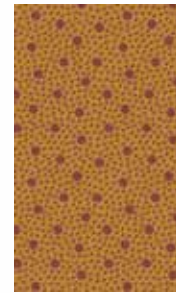
5179-K



5179-G



5179-R



5179-Y



5180-G



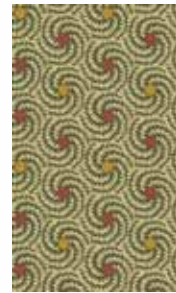
5180-R



5181-G



5181-N



5182-G



5182-N



5183-G



5183-R



5184-N



5184-R



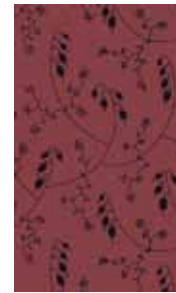
5185-N



5185-G



5186-G



5186-R



5187-K



5187-R



5187-Y



5188-G



5188-R



5189-K



5189-N

Bolts needed to cut project kits										
	Yardage	10 kits	20 kits	30 kits	Fat 1/4 each:		Fat 1/8 each			
5185-G	1½	1	2	3	1 bolt each will yield 60 kits		1 bolt each will yield 120 kits			
5187-K	¾	1	1	2	5178-Y	5181-N	5178-G	5181-G	5184-N	5187-R
5183-R*	¾	1	1	2	5179-G	5184-R	5178-R	5182-G	5185-N	5188-G
5178-Y**	3⅝	3	5	8	5179-R	5187-Y	5179-K	5182-N	5186-G	5188-R
* includes binding					5179-Y	5189-K	5180-G	5183-G	5186-R	5189-N
**Yardage needed for backing (3⅝ yards or two 62" x WOF lengths per kit)					5180-R					